

**NOKESVILLE QUAD.**

42'30"  
76-246

WELFLY (on Valley  
V. dr. betw Brent  
IV Cem.

Nelson House 76-24

Old Prince William  
Courthouse + Jail  
76-21

School 76-231

BAVDER HOUSE 76-24

St. James  
Church 76-25

(INDEPENDENT HILL)  
5561 III HW

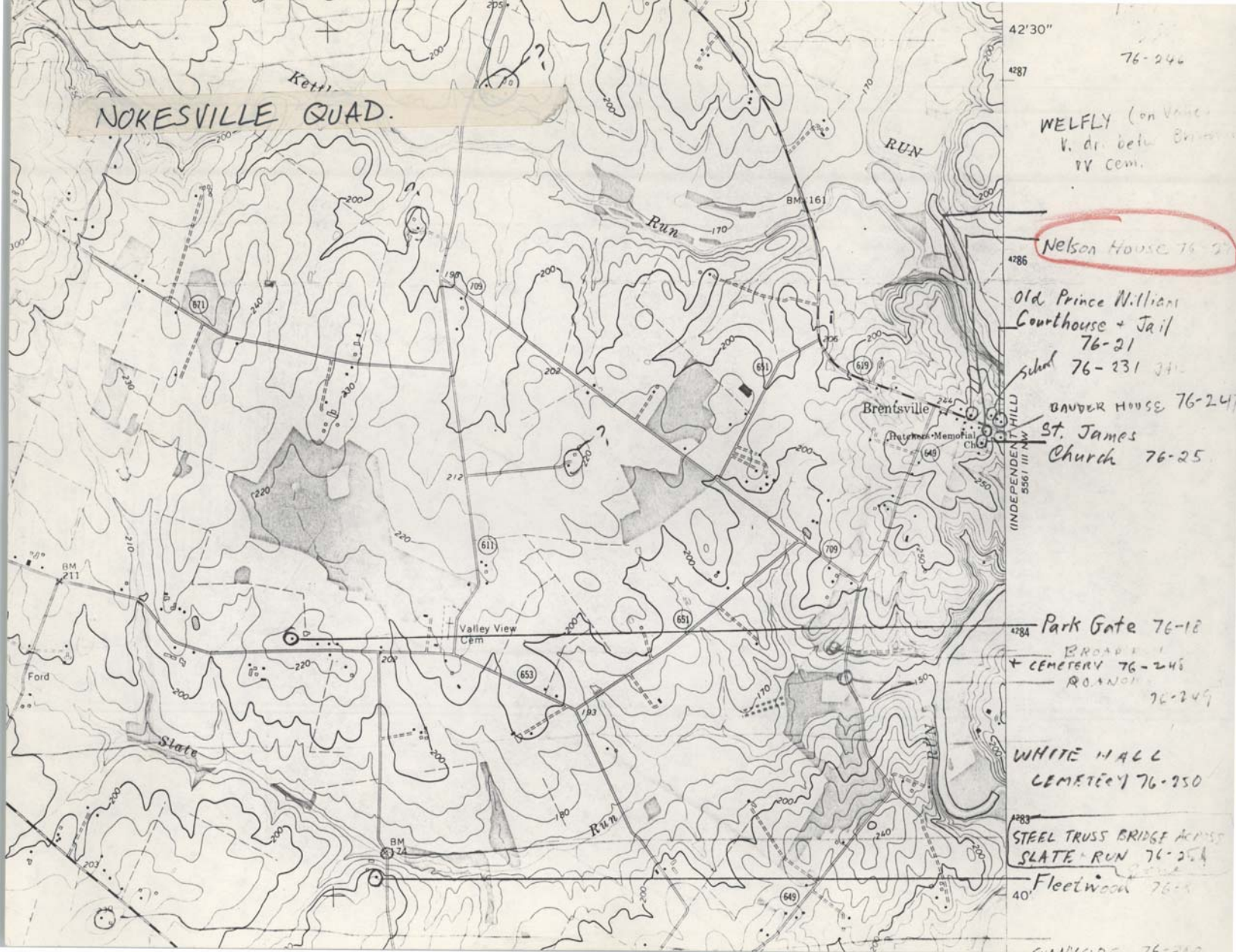
4784 Park Gate 76-18

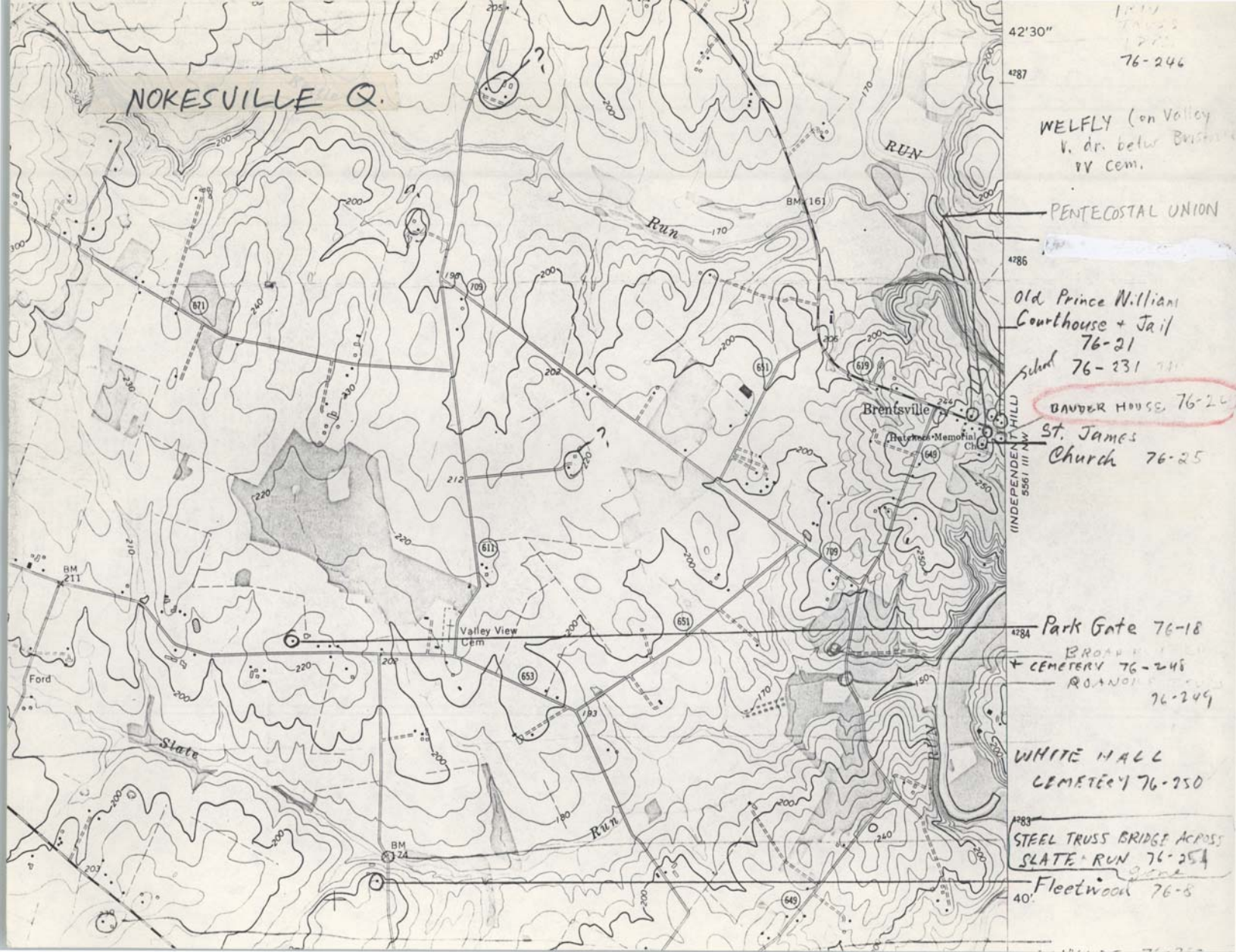
BROAD  
+ CEMETERY 76-246  
ROAD 76-249

WHITE WALL  
CEMETERY 76-250

4783 STEEL TRUSS BRIDGE ACROSS  
SLATE RUN 76-254

40' Fleetwood 76-2





NOKESVILLE Q.

RUN

Run

Brentsville

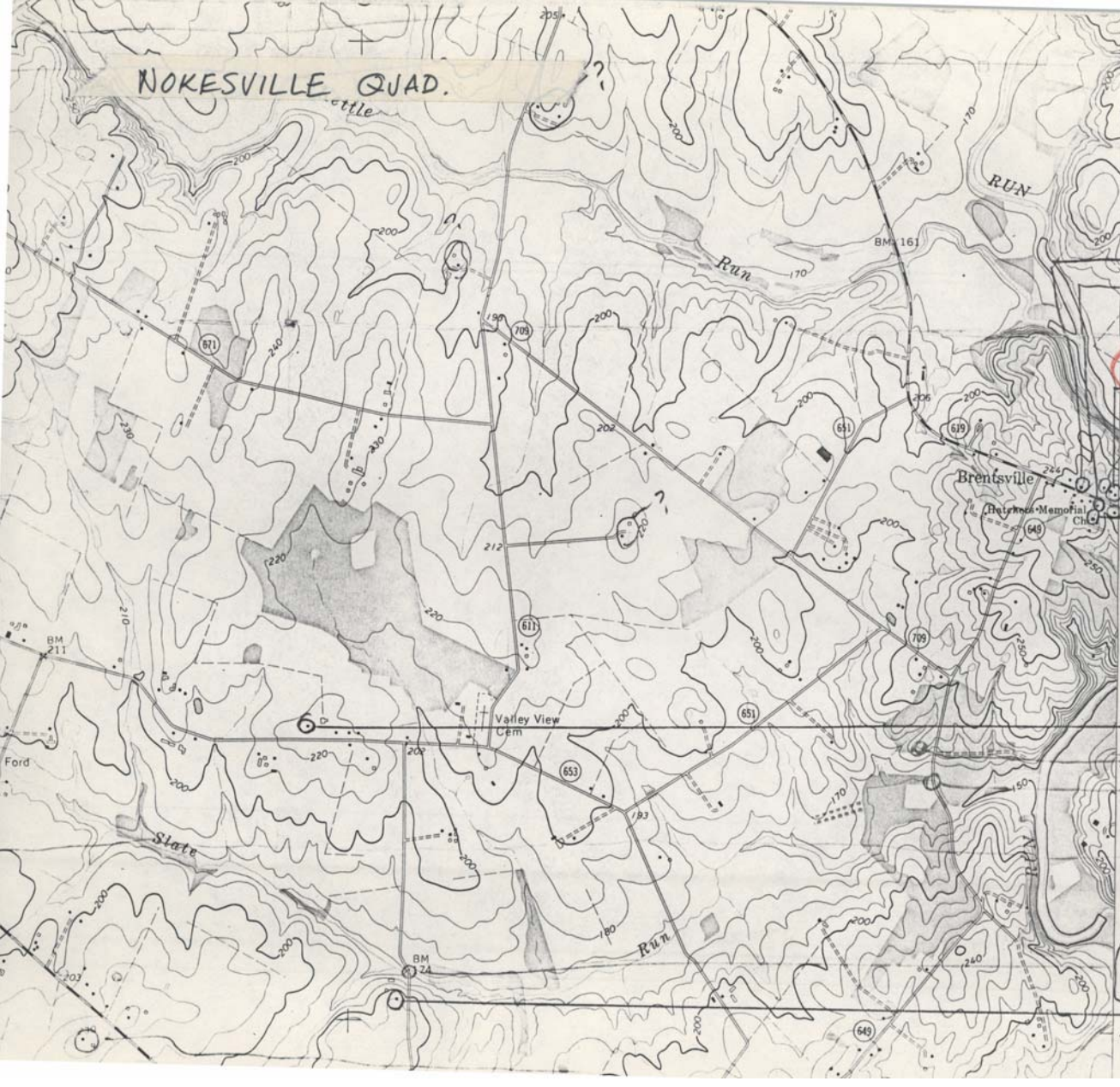
Valley View  
Cem

Slate

Run

Fleetwood 76-8

NOKESVILLE QUAD.



- 42'30"
- 4287
- 76-24
- WELFLY (on Valley V. dr. betw Brentsville & IV Cem.)
- 4286 Nelson House 76-27
- Prince William Courthouse 76-21
- 76-231
- BAVIER HOUSE 76-247
- St. James Church 76-25
- 4284 Park Gate 76-18
- BROAD CEMETERY 76-246
- ROAD 76-249
- WHITE HALL CEMETERY 76-250
- 4283 STEEL TRUSS BRIDGE ACROSS SLATE RUN 76-254
- 40' Fleetwood 76-2

Prince William Courthouse 76-21

Park Gate 76-18

WHITE HALL CEMETERY 76-250

STEEL TRUSS BRIDGE ACROSS SLATE RUN 76-254

Fleetwood 76-2

NOKESVILLE QUAD.

42'30"  
4287  
76-246

WELFLY (on Valley  
v. dr. betw. Bristol  
IV Cem.

Nelson House 76-25

Old Prince William  
Courthouse + Jail  
76-21

School 76-231

DANDER HOUSE 76-247

St. James  
Church 76-25

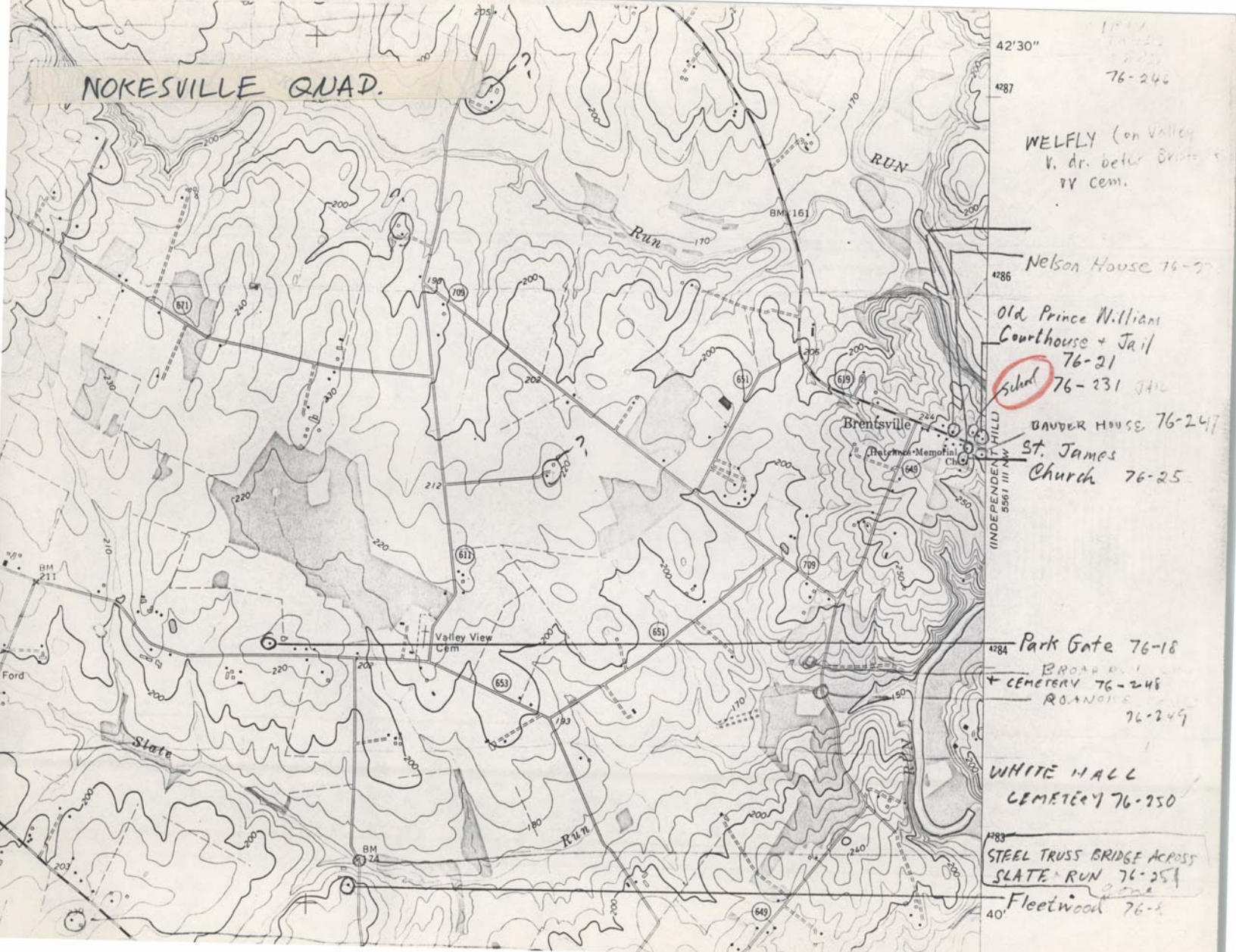
Park Gate 76-18

BROAD R. I.  
+ CEMETERY 76-248  
ROANOKE 76-249

WHITE HALL  
CEMETERY 76-250

STEEL TRUSS BRIDGE ACROSS  
SLATE RUN 76-254

Fleetwood 76-2



NOKESVILLE QUAD.

42'30"  
4287  
76-246

WELFLY (on Valley  
V. dr. betw. Bristow  
V. Cem.

Nelson House 76-21

Old Prince William  
Courthouse + Jail  
76-21  
School 76-231

BAVIER HOUSE 76-247

St. James  
Church 76-25

Park Gate 76-18

BROAD  
+ CEMETERY 76-248  
ROANOKE  
76-249

WHITE HALL  
CEMETERY 76-250

STEEL TRUSS BRIDGE ACROSS  
SLATE RUN 76-254

Fleetwood 76-8

